

Code of practice for the use of concrete pumps

RESPONSIBILITY

The supplier of the concrete pump service (the owner of the pump)

is responsible for:

- ➔ Agreement with the construction site management on the conditions of pumping
- ➔ Informing the pump operator about the construction site in good time
- ➔ Condition of the machine
- ➔ Inspection and certification of the machine
- ➔ Documented training and instruction
- ➔ Compliance with current laws and regulations

The pump operator

is responsible for:

- ➔ Carrying out his or her work in accordance with current laws and regulations
- ➔ Safe setting-up
- ➔ Advance arrangements with site management
- ➔ Condition of truck and pump
- ➔ Traffic safety and on-site warning signs
- ➔ Reporting safety defects and any other deficiencies of the pump

The construction site management (site manager, foreman, leading worker, operation supervisor, etc.)

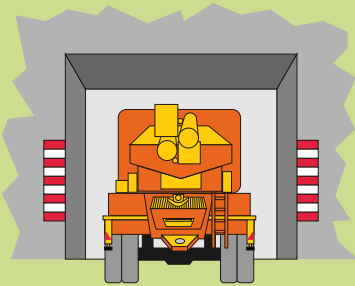
is responsible for:

- ➔ Information on a safe set-up site
- ➔ Information on secure approach routes
- ➔ Access route to the set-up site
- ➔ Necessary approvals to set up in road traffic
- ➔ Securing live power cables
- ➔ Safe working conditions on the construction site
- ➔ Ensuring that the concrete works are carried out in accordance with current laws and regulations

All concerned parties named above are responsible for the observance of these requirements – pumping must otherwise not take place.

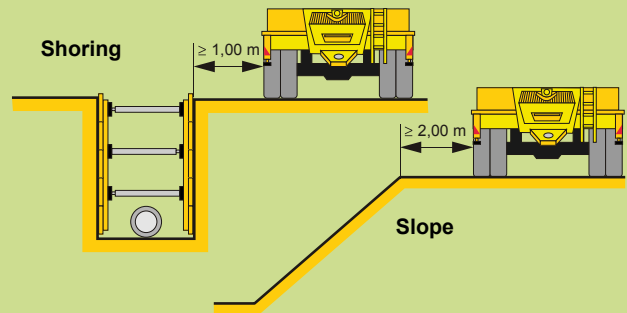
ESSENTIAL PRECAUTIONS!

Approach route



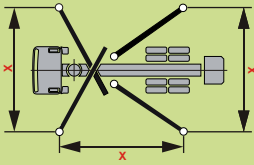
- Necessary passage height and width on the approach route
- Sufficient load-bearing capacity of bridges and roads

Safe clearance when passing

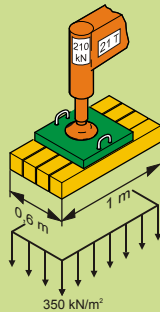


Stability

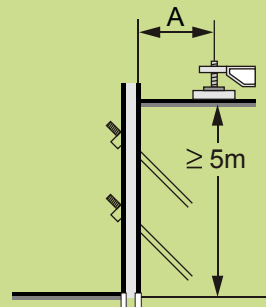
X Placement of the support legs



- Max. load on the support legs
- Necessary space for base cushions, depending on the ground conditions

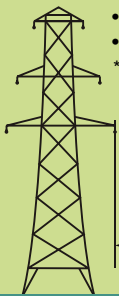


Safe clearance from excavations



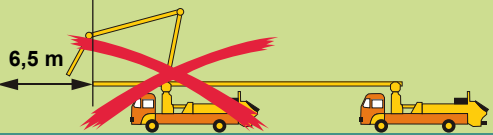
- If the excavation depth is ≥ 5 m, the responsible construction site management must use static calculation to determine the clearance A

High-voltage power lines

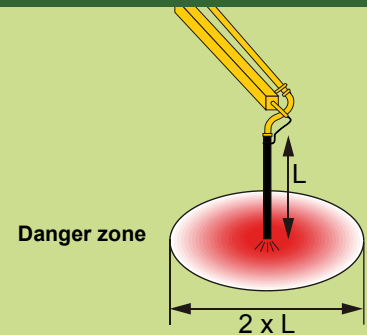


- Safest solution: Disconnect the electricity, or else
- Keep to safe clearance!

* Contact the operator of the power line in advance if parts of the pump might come closer than 30 m to the power line



Starting to pump



FORBIDDEN FORBIDDEN FORBIDDEN

Forbidden at the end hose



- Rigid end pieces
- Reducers



- Extension of the end hose

Exception: Extension in compliance with the operating instructions